



# The Gathering Tank

Volume 19, Issue 3 December 2014



Robyn Pearl, Editor

A Newsletter of the New Hampshire Maple Producers Association, Inc.



## Come one, Come all to the Annual Meeting!

The Annual Meeting of the NHMPA is scheduled for Saturday, January 24, 2014 at the Lodge of the Elks, Lebanon, NH. The meeting starts at 10am and will conclude around 3pm. Coffee and pastries will be offered prior to the meeting starting at 9am. A business meeting will be conducted to report on the status of the association.

This meeting will feature a discussion on proposed by-law changes and voting for open Board of Director positions. We have 5 director positions open this year. An article on the process of how to get on the ballot is on page 3.

The new grading rules have been adopted. A member of the NH Dept. of Agriculture Division of Regulatory Services will be in attendance for a brief confirmation of the rules and to answer any remaining questions on the topic. There is an article on page 3 regarding the enactment of the rules.

A buffet lunch is available and selections must be reserved in advance. Please indicate your choice on the membership application on page 7 of this newsletter and mail to Don Lassonde by January 15th. Meal choices are **not** available on the online application.

After lunch, the Carlisle Award will be presented. **A representative from each qualified sugar house must be in attendance in order to receive an award.**

The afternoon session will feature "The Laughing Couple", Carolyn and Rick Hunt. Carolyn tells the native story of "How the People Got Maple Syrup" while Rick illustrates the story on a mural. The mural is given to the NHMPA and we hope to display it at the museum or another location.

The meeting will be closed after the door prize raffle. Vendors will be present with equipment and supplies. Join your fellow sugar makers for a great day of information and camaraderie.

## Celebrate Our 20th Annual Maple Weekend



The NHMPA will be celebrating our 20th Annual Maple Weekend this year on March 28-29, 2015. We will also be hosting our second Maple Month from March 14th- April 5th. This year we will have 2 weekends of the month preceding Maple Weekend. We had found last year that the weekend prior to Maple Weekend was nearly as popular as Maple Weekend itself.

We will continue to use the regional system for promotions. Our popular event has grown in interest and importance over time. Let's keep the excitement going! **Sign up** for Maple Weekend and Maple Month on **page 5** of this newsletter. **Deadline** for sign up is **February 15th**.

## Attend the Regional Meetings



The regional educational sessions have been scheduled for the following dates:

- Tues, Feb 3-** Intervale Farm Pancake House, Rte 114 & Flanders Rd, Henniker
- Thurs, Feb 5-** Stuart & John's Sugar House, Rtes. 63 & 12, Westmoreland
- Tues, Feb 10-** Mt Cube Farm, Gov. Thomson Hwy, Orford
- Thurs, Feb 12-** Fish & Game Research Bldg., Rte 3, Lancaster

All meetings begin at 7pm. Regional sessions are free and open to NHMPA members and non members alike. Starting in 2015, the NH Dept. of Ag will be no longer check hydrometers at Regional meetings. Instead, they will be offering "hydrometer clinics" strategically around the state to offer this service to any maple producer. Details will be posted on our website as soon as they become available.

## President's Corner

## Secretary's Notes

The holiday season is upon us again with much to do before the end of the year. Some of us were able to attend one of the many schools that are now offered here in NH during the fall months. There is a lot to learn about new equipment and techniques to make maple syrup.

In the world of maple, there is a lot happening that may affect NH Maple Producers. We have the Farm Bill, expansion and increased production, grade changes in 2015. How these changes are going to effect us as producers in NH are questions that I have in mind.

The coming months look to be cold and snowy. Let's all hope that it brings a productive and enjoyable sugaring season this spring.

- Bodie Peters

## Publicist's Report



It certainly has been a busy fall! I have been working on updating many of our publications:

- ◆ The NHMPA cookbook has new recipes added and is currently being reprinted. I am hoping that the new edition will be available for the Annual Meeting.
- ◆ The 2015 Sugar House Tour Guide is also heading to print. It is a very popular brochure. We send out 11,000 copies annually to the state rest areas and also have them available to the public at the fairs, educational programs and as always by request.
- ◆ I have been working on creating a new poster to demonstrate the grading changes. It is exclusive to NH producers as it features our state prominently as part of the poster. It is waterproof and ready to hang in your sugar house. It will be available at the Annual Meeting. I have also been developing a rack card for consumers to help them to understand the new grades. It includes the new taste descriptors and grade changes on one side and the nutritional information on the other.

I hope to have more information on upcoming events for you at the Annual Meeting.

- Robyn Pearl

Our membership now is 388, down from 402 in 2013. This is a little disappointing. As we don't usually bill members, we always mention that the dues are due in the Gathering Tank with an application in the January issue. The information you send us updates your profile with your latest information and maple production for overall statistics. Our fiscal year is from January 1 to December 31. Please fill out this application or go on the website whether you decide to attend the annual meeting or not.

The product sales at the Hopkinton and Deerfield fair sugarhouses went very well this year with the exception of one rainy day at Hopkinton. I would like to once again thank all the volunteers who staffed these sugar houses and helped maintain a strong maple presence at these fairs.

Felker Award applications will be available at the annual meeting or anytime from the Secretary. If you know of anyone not older than 18 by June 1st who is interested in maple sugaring and would like to compete for this award, please let me or anyone on the board know and we will send them an application. The prize is a plaque and \$100 check.

- Don Lassonde

Great minds  
discuss ideas.

Average minds discuss events.

Small minds  
discuss people.

(Eleanor Roosevelt)

# New Grade Changes Enacted

Jennifer Gornert, Director of the Division of Regulatory Services in the New Hampshire Department of Agriculture announced that the new maple grade changes have gone into effect as of December 16, 2014. All New Hampshire maple producers are required to implement the new grading system by the 2016 season. There is a one year grace period to allow producers to use up any inventory that has the old grades, i.e.; containers, labels, etc.

A printable PDF copy of the complete new grade rules can be found on our website, [www.nhmapleproducers.com](http://www.nhmapleproducers.com), under the Sugarmakers tab.

Producers who are ready to switch to the new system for the 2015 season will find the new labels available at their dealers. Posters and rack cards with the new grade information will also be available through the NHMPA and the Department of Agriculture. Dee Linn, our Big E Director, said that the new grade system will also be used this year at the NHMPA booth.



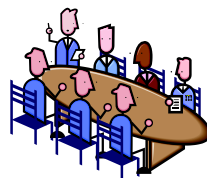
## Felker Award Applications

Do you know a student who is interested in the maple industry? Did you know that they could win an award for that interest? Every year, the Walter A. Felker Award is given to a young man or woman with the intent to promote and encourage an interest in the production and marketing of high quality maple products.

The award is named in honor of Walter A Felker, a former director of the Bureau of Markets at the Department of Agriculture. Mr. Felker was instrumental in the formation of the NHMPA in 1943 and was the association's secretary until his death in 1946.

The recipient of the award receives an engraved plaque to recognize their achievement as well as a \$100.00 cash prize. Applications can be obtained from Don Lassonde 456-6052 or [donlass@aol.com](mailto:donlass@aol.com) or Robyn Pearl 225-3757 or [nhmpa@aol.com](mailto:nhmpa@aol.com). Details about the project are outlined on the application.

This is a great way to involve young members of our community in our long standing traditions.

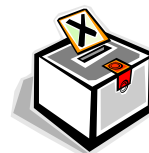


# Election Update

The Board of Directors has five positions that will be up for election this year. If you are interested in running for one of the seats, please contact a director or Robyn before January 6, 2015 and your name will be added to the list. The nominating committee will be reviewing the candidates and preparing the ballot at their next Board meeting on January 6, 2015 at 6:00 P.M. Nominations will also be taken from the floor during the Annual meeting on January 24th, 2015 before ballots are cast.

The Board meets about 6 times a year for approximately 2 hours each meeting. Contact a director if you want more details on what commitment is involved.

Do you have ideas that you feel would help move the Association forward? Don't hesitate to get involved. All members are welcome to attend any board meeting. The dates are posted on our website.



The 3rd Annual Maple School was held on October 18, 2014 at the Winnesquam High School in Tilton. There was a good turnout of members and non-members alike. Vendors were available with new products available for the 2015 season. The technical sessions offered great information on all topics from basic sugaring skills to using more advanced equipment and techniques.

Ideas were passed around for next year's school on how to get the most out of the day. There may be a more structured system in place where attendees will be able to choose a basic, intermediate or advanced track based on the level of their sugaring operation and attend classes geared towards that level throughout the day. Also, certain classes may be offered multiple times during that day as well.

Thank you to Steve Roberge and Eric Johnson for again putting together a successful maple school program. We appreciate your hard work.





# IMSI REPORT

The NAMSC/IMSI annual meeting in Wolfville, NS on Oct. 21-24 covered a lot of ground. Highlights, in no particular order are:

Worldwide maple markets are expanding at a rate of 5-6%/year while taps and processing equipment are increasing at 4-7%. However with production increases due to improved management, especially use of higher vacuum and better sanitation, there is a serious question whether the current market can absorb the production increase. To address this question, the IMSI set up a market study group that met on May 7, 2014 and came up with a full page marketing plan that was presented at the annual meeting.

Another subject discussed with no real consensus was the price for leased taps. Many felt that with increased per tap production maybe the price per tap should be higher. As a result of increased concern and greatly lowered lead limits in CA, the industry has begun an extensive lead reduction program that will affect any of us that sell bulk syrup to commercial packers.

Implementation of the new grading system was discussed at length. See Robyn's report for the latest information for NH. Major improvements to the NAMSC website are planned, such as setting up a library of past Digest issues, having the member directory on line, and other technical improvements to make the site more useable. Thanks to Karl Zander for the time and support he provided at no cost. The update to the Producers Manual was reviewed. This will include substantial revisions to chapters 6,7,8 and 11 with the addition of a new chapter on food safety. Planned release of this update is Fall 2016.

Finally, to meet increased costs, the NAMSC is proposing a dues increase of \$2.00/ member, to be implemented at \$.50/year for 4 years or \$2.00 all at once next year. My feeling and that of some directors I've spoken to is that we should take the one shot route rather than a nickel/dime approach. After all, we're only looking at less than the cost of an 8 oz. container of syrup.

It's impossible to condense 4 days of meetings, technical sessions, tours, and personal interactions into a few short paragraphs. I really recommend that you go see for yourself. The next meeting will be in PA in Oct. 2015 followed by Vermont in 2016. NH will host the meeting in 2018. There's no excuse for this organization to not be well represented at that one.

-Bill Eva



# NHMPA Container Prices for 2015 Season

The Container Chairman in conjunction with Bacon Jug, Inc. have set the following prices:

<u>Size</u>	<u>Case Quantity</u>	<u>Cost</u>	<u>Individual</u>
Gallon	24	\$ 51.00	\$ 2.32
1/2 Gallon	48	78.50	1.82
Quart	80	97.50	1.40
Pint	100	107.00	1.32
1/2 Pint	100	97.00	1.25
3.4 oz.	200	168.00	1.05

Conrad Chapple Sr.  
537 Meridan Hill Rd.  
Columbia, NH 03590  
(603) 922-3460

Bascom Maple Farm  
56 Sugar House Rd.  
Alstead, NH 03602  
(603) 835-6361

Bill Cheney  
56 Broomstick Lane  
Campton, NH 03223  
(603) 726-3829

Sunnyside Maples  
1089 North Rte 106  
Loudon, NH 03307  
(603) 783-9961

**D  
E  
A  
L  
E  
R  
S**

Bill Eva  
107 Longview Rd.  
Hancock, NH 03449  
603) 525-3666

Fuller's Sugar House  
267 Main Street  
Lancaster, NH 03584  
(603) 788-2719

Tomapo Farm  
110 Storrs Hill Rd.  
Lebanon, NH 03766  
(603) 448-1145

Westwynde Farm  
Rt. 171 317 Old Mtn Rd.  
Moultonboro, NH 03254  
(603) 476-5907

## Odds & Ends

- This year's Farm and Forest Exposition will be held on February 6-7, 2015. Volunteers are needed to help at the NHMPA booth. Please contact Brad Presby (bpresby@roadrunner.com or 616-2463) if you can lend a hand.
- Send us your photos of the 2015 season. We love to see your operation and we will post them on our website.
- Congratulations to Patrick and Miranda (Milano) Colby of Maple Ridge Sugar House in Loudon on their marriage this past October. Best wishes to you both!



# Maple Sugaring Month

## Participation Form

In choosing to participate, the level of what you want to offer is entirely up to you. If you wish to offer something similar to what you do on Maple Weekend, please do so. If that is more than you want or are able to do, please create your event at a level that is manageable for your operation. The same is true of when to sign up for. If certain weekends work better for you, only register for those. The dates are set to follow the sugaring season, beginning from March 14th in the south until April 5th in the north.

To help tourists better understand our state, we will be identifying location by geographic region. The state will be divided into 7 regions: Great North Woods, White Mountains, Lakes Region, Monadnocks, Merrimack Valley, Seacoast and Dartmouth - Lake Sunapee. If you found that you were misidentified in the region you were placed last year, please let me know and I will be sure to reassign you. We had used the state's suggested list.

**Please note: All contact information on this form is for public use. List the means by which you wish visitors to contact you.**

Sugar House Name: \_\_\_\_\_

Maple Producer's Name: \_\_\_\_\_

**Physical Address of SUGAR HOUSE:** \_\_\_\_\_

Town: \_\_\_\_\_ ZIP: \_\_\_\_\_ Region: \_\_\_\_\_

Phone: \_\_\_\_\_ Email/Website: \_\_\_\_\_

**Mar 14-15:** open hours on Sat \_\_\_\_\_ Sun \_\_\_\_\_ **Mar 21-22:** open hours on Sat \_\_\_\_\_ Sun \_\_\_\_\_

**\*Mar 28-29:** open hours on Sat \_\_\_\_\_ Sun \_\_\_\_\_ **Apr 4-5:** open hours on Sat \_\_\_\_\_ Sun \_\_\_\_\_

**\* Maple Weekend - it will continue to be the highlight of the season**

Please give a brief description of what you will be offering during Maple Sugaring Month (demonstrations, tours, products you sell, samples, doughnuts & coffee, etc.) If you have an event special to one weekend, please note. Specify if there is a charge for any activities. Please be specific and concise.

---

---

---

---

---

---

---

---

**Return this form by February 15th to:** Robyn Pearl, 409 Loudon Ridge Road, Loudon, NH 03307

Questions or need more information? Email Robyn at [nhmpa@aol.com](mailto:nhmpa@aol.com) or call 225-3757.



## New Hampshire Maple Producers Association, Inc.

### Annual Meeting Agenda

**When:** January 24, 2014

**Where:** Lebanon Lodge of Elks, Heater Road, Lebanon, NH

**Time:** 9:00 -10:00 am - Coffee and Pastries

10:00 - 11:00 am - Business Meeting



Officers' Reports

Committee Reports

NH Maple Museum Annual Meeting

Old/New Business

11:00 – Noon - Discussion on NHMPA By Law changes, Voting for Board of Director positions, Updates and Q & A on Grade Changes

12 Noon - Buffet Lunch

1:00 pm - 1:30 pm - Carlisle Award presentation

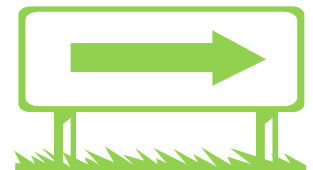
1:30 pm - 2:30 pm - “The Laughing Couple” presenting “How the People Got Maple Syrup” - Carolyn and Rick Hunt

2:30pm - 3:00 pm - Door prizes and adjournment



---

**DIRECTIONS TO ANNUAL MEETING:** Take Exit 18 off I-89. Go north on Route 120 to the first traffic light. Turn right on to Heater Road. The Elks hall is on the left, a large red building. Our meeting is upstairs.



**New Hampshire Maple Producers Association, Inc.**

**APPLICATION FOR MEMBERSHIP**

Date \_\_\_\_\_ New Member? \_\_\_\_\_ 2014 Member? \_\_\_\_\_

Are you receiving the Maple Syrup Digest? Yes \_\_\_\_\_ No \_\_\_\_\_

Average # of gallons produced annually \_\_\_\_\_ # of taps \_\_\_\_\_

**ANNUAL DUES: \$20.00 (January 1- to December 31-)**

Members are being asked to make a VOLUNTARY DONATION to the Promotion Committee Fund.

THIS IS IN ADDITION TO THE ANNUAL DUES. A suggested donation schedule is the following:

1 to 999 taps \$5 \_\_\_\_\_ 2501 taps to 4000 taps \$20 \_\_\_\_\_

1000 to 2500 taps \$10 \_\_\_\_\_ 4001 taps to 5500 taps \$30 \_\_\_\_\_ 5501+ taps \$40 \_\_\_\_\_

**Please print or use a name & address label**

Name \_\_\_\_\_

Sugar House Name \_\_\_\_\_

Mailing Address \_\_\_\_\_

Town \_\_\_\_\_ State \_\_\_\_\_ Zip \_\_\_\_\_

Telephone \_\_\_\_\_ E-mail \_\_\_\_\_

**Make checks payable to:** NH Maple Producers Association (NHMPA)

**Return to:** NHMPA, Don Lassonde, Secretary, 402 Route 103 East, Warner, NH 03278-4418

Membership applications can also be submitted online at [www.nhmapleproducers.com](http://www.nhmapleproducers.com) We have PayPal!

**Note:** If you wish to make a lunch reservation, they are **not** available online. Please mail the application.

**Lunch Buffet for the Annual Meeting:**

Please choose from the following: Baked Stuffed Chicken # \_\_\_\_\_ or Roast Beef # \_\_\_\_\_

With salad, potatoes, mixed vegetables, dessert and beverages.

**Cost: \$14.95 each. Please make lunch reservations by January 15th.**

(Lunch reservations are not required if you wish to attend the meeting only.)

**Amount Enclosed: Annual dues \$20.00 Donation \$ \_\_\_\_\_ Lunch \$ \_\_\_\_\_ Total: \$ \_\_\_\_\_**

How do you think the NHMPA can better serve its members? \_\_\_\_\_

\_\_\_\_\_

\_\_\_\_\_

IMPORTANT: ANNUAL MEETING NOTICE ENCLOSED

New Hampshire Maple Producers Assoc.  
409 Loudon Ridge Road  
Loudon, NH 03307

